



Gray Metal South, Inc.

P.O. Box 1126, Dunn, NC 28335
600 North Powell Avenue, Dunn, NC 28334

Phone: 1-910-892-2119

Fax: 1-910-892-7053

www.graymetalsouth.com

Job:

Location:

Engineer:

Contractor:

P.O #:

Job #:

Representative:

CERTIFIED CORRECT

By: Clay Dunigan

Title: Plant Engineer

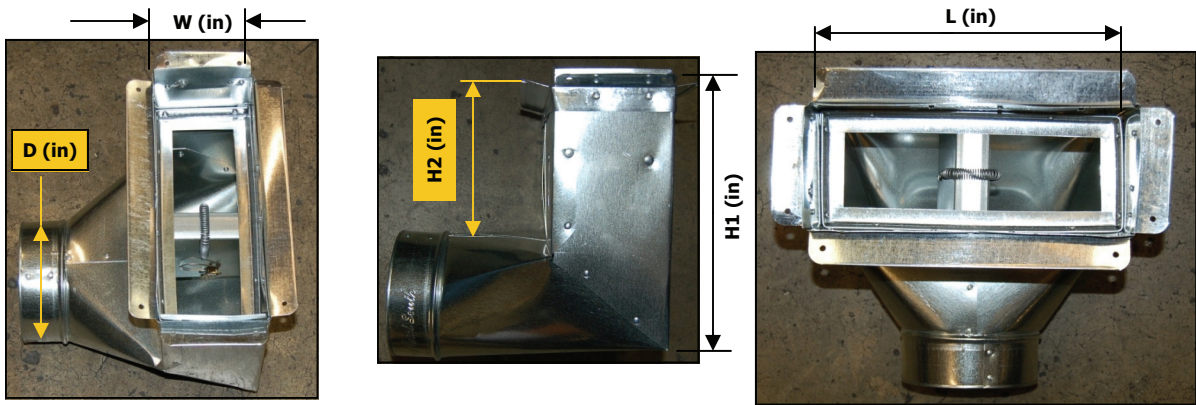
Date: 9-5-08

GMS Part Number:

No. 113 REAFD

DESCRIPTION

- Register Extended Angle Boot with Fire Damper
- (30) gauge (.012 in) Galvanized
- Packaged To Order



Part #	L	W	D	H1	H2
8x2x6-113 REAFD	8	2	6	9	6
8x4x4-113 REAFD	8	4	4	9	6
8x4x5-113 REAFD	8	4	5	9	6
8x4x6-113 REAFD	8	4	6	9	6
10x2x5-113 REAFD	10	2	5	9	6
10x2x6-113 REAFD	10	2	6	9	6
10x4x4-113 REAFD	10	4	4	9	6
10x4x5-113 REAFD	10	4	5	9	6
10x4x6-113 REAFD	10	4	6	9	6
10x4x7-113 REAFD	10	4	7	9	6
10x4x8-113 REAFD	10	4	8	9	6
10x6x5-113 REAFD	10	6	5	9	6
10x6x6-113 REAFD	10	6	6	9	6
10x6x7-113 REAFD	10	6	7	9	6
10x6x8-113 REAFD	10	6	8	9	6

Part #	L	W	D	H1	H2
12x2x5-113 REAFD	12	2	5	9	6
12x2x6-113 REAFD	12	2	6	9	6
12x2x7-113 REAFD	12	2	7	9	6
12x2x8-113 REAFD	12	2	8	9	6
12x4x5-113 REAFD	12	4	5	9	6
12x4x6-113 REAFD	12	4	6	9	6
12x4x7-113 REAFD	12	4	7	9	6
12x4x8-113 REAFD	12	4	8	9	6
12x6x6-113 REAFD	12	6	6	9	6
12x6x7-113 REAFD	12	6	7	9	6
12x6x8-113 REAFD	12	6	8	9	6
12x8x8-113 REAFD	12	8	8	9	6
14x2x5-113 REAFD	14	2	5	9	6
14x2x6-113 REAFD	14	2	6	9	6
14x2x7-113 REAFD	14	2	7	9	6

NOTE: Meets SMACNA Specifications



Gray Metal South, Inc.

P.O. Box 1126, Dunn, NC 28335
 600 North Powell Avenue, Dunn, NC 28334

Phone: 1-910-892-2119

Fax: 1-910-892-7053

www.graymetalsouth.com

Job:

Location:

Engineer:

Contractor:

P.O #:

Job #:

Representative:

CERTIFIED CORRECT

By: Clay Dunigan

Title: Plant Engineer

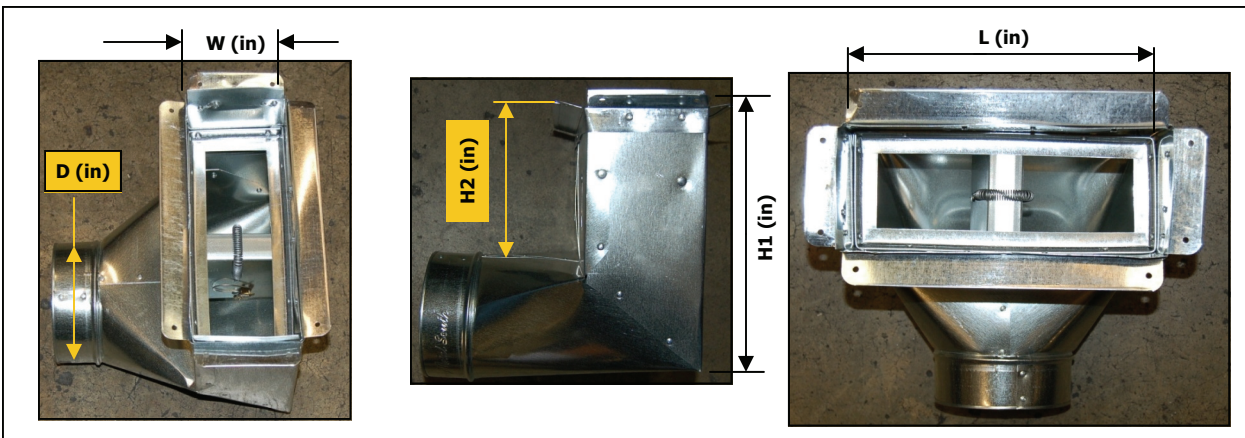
Date: 9-5-08

GMS Part Number:

No. 113 REAFD

DESCRIPTION

- Register Extended Angle Boot with Fire Damper
- (30) gauge (.012 in) Galvanized
- Packaged To Order



Part #	L	W	D	H1	H2
14x2x8-113 REA	14	2	8	9	6
14x4x6-113 REA	14	4	6	9	6
14x4x7-113 REA	14	4	7	9	6
14x4x8-113 REA	14	4	8	9	6
14x6x8-113 REA	14	6	8	9	6
14x6x6-113 REA	14	6	6	9	6
14x6x7-113 REA	14	6	7	9	6

NOTE: Meets SMACNA Specifications